

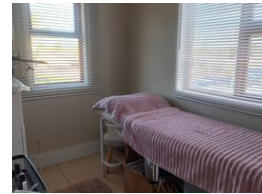
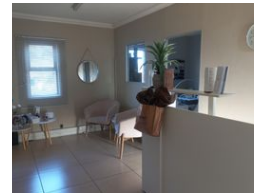
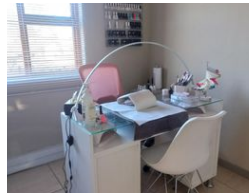


Sivanandan  
Govindasamy Packary  
0824920583  
siva@choprop.co.za

Contact Choprop Rentals


012 6534444

146 Willem Botha Street  
Wierda Park  
0157



R137 per m<sup>2</sup>

Gross Monthly Rental R137 Excl. VAT

 0  0

Prime location in Wierda Park!!!

Perfect rental opportunity for office space!!!

Immaculate and neat building with great exposure on the main road in Wierda Park area which is situated in a business hub.

As one enters one can find a spacious reception area, tiled and flowing into three separate offices. There is a separate office space, which leads to a huge open plan board room, tiled. The office space comes with a separate kitchenette and bathroom, tiled.

The building offers private parking for all tenants. Well secured and maintained on a daily basis.

Close to residential area, schools, shopping centers, close all main roads leading to the major highways.

## Features

**Zoning** Commercial

**Sizes**  
Floor Size 97m<sup>2</sup>