



**Mansukh Magan Chhiba**  
 0765779222  
 mansukh@choprop.co.za

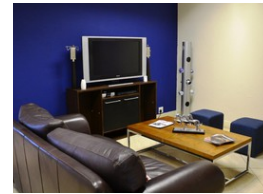
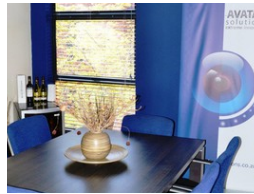
Contact Choprop Sales

012 6534444

146 Willem Botha Street  
 Wierda Park  
 0157



Web Ref CL272



**R1,375,000**



Secure, excellent location 145sqm office compliment, with air conditioners, 3 phase electricity, abl

An excellent office compliment situated in a well managed secure office park located in Jean avenue within close proximity to schools, highways, petrol stations, Gautrain station, as well as several popular shopping centres with a variety of shops, supermarkets and restaurants including Steakhouse, News Cafe and Crowdaddy's.

The office park has 24 hour manned security and access control giving one a sense of relaxation and an air of tranquility that can only result in increased business output and a relaxed atmosphere amidst beautiful and pristine gardens that surround each of the buildings.

This neat office space located on Jean Avenue, consist of a reception/entrance area, a large boardroom, open plan office,

## Features

**Zoning** Commercial

### Sizes

Floor Size 145m<sup>2</sup>  
 Land Size 145m<sup>2</sup>